

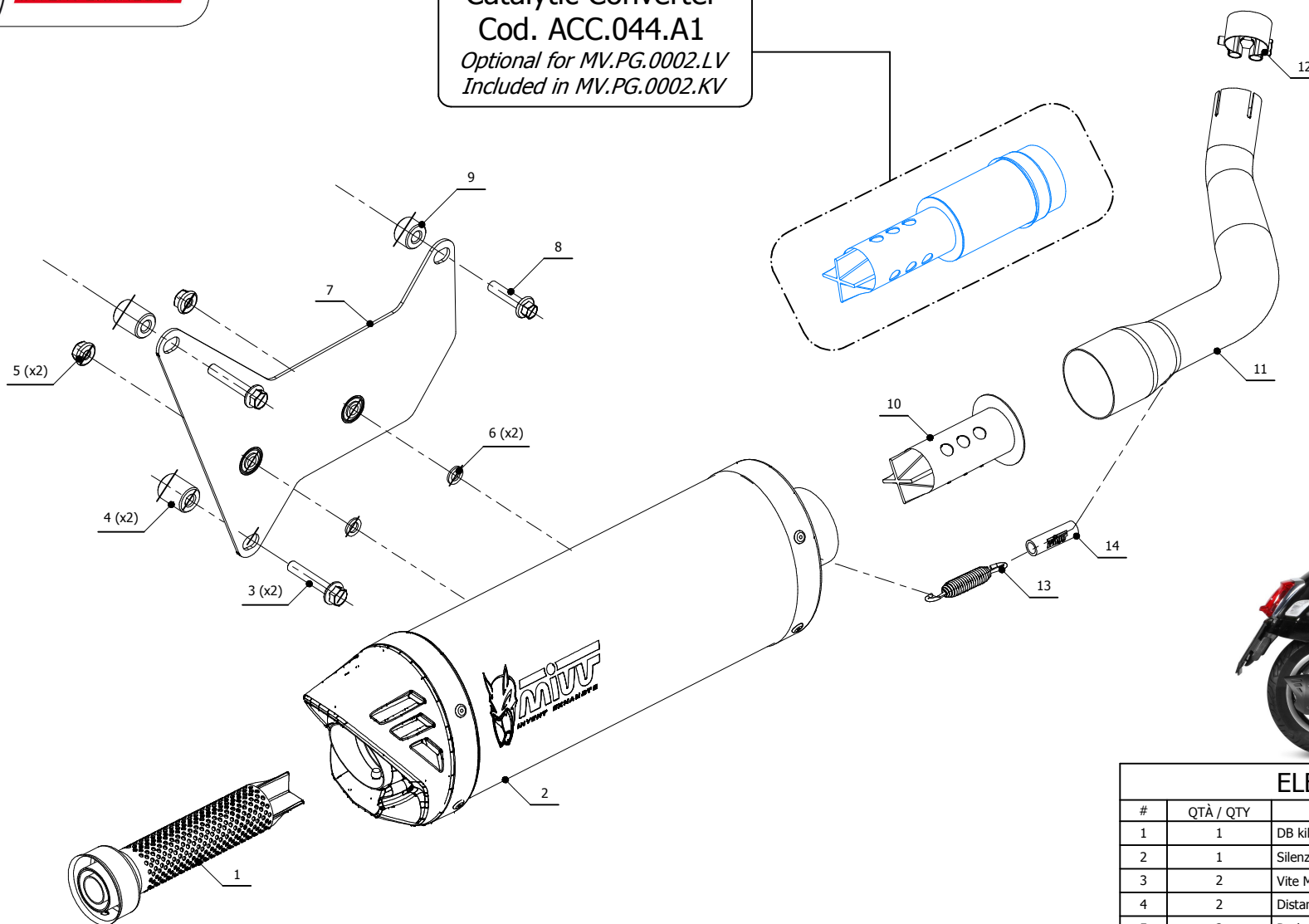


Catalytic Converter

Cod. ACC.044.A1

Optional for MV.PG.0002.LV

Included in MV.PG.0002.KV



ELENCO PARTI / PARTS LIST

#	QTÀ / QTY	DESCRIZIONE / DESCRIPTION	CODICE / CODE
1	1	DB killer / DB killer	50.DK.156.0
2	1	Silenziatore / Muffler	MOVER L.360 Ø1 55
3	2	Vite M8x45 / Screw M8x45	50.73.697.1
4	2	Distanziale alluminio / Aluminium spacer (Øe.20 Øi.8,5 h.25)	50.SS.678.1
5	2	Dado M8 flangiato / Flanged nut M8	50.73.393.1
6	2	Rondella M8 / Washer M8	50.73.270.1
7	1	Staffa Mover / Mover bracket	50.SS.1202.0
8	1	Vite M8x35 / Screw M8x35	50.73.598.1
9	1	Distanziale alluminio / Aluminium spacer (Øe.20 Øi.8,5 h.14)	50.SS.058.1
10	1	Db Killer / DB killer	50.DK.081.0
11	1	Tube di raccordo / Link pipe	97MVPG0002LV
12	1	Fascetta Ø 31/34 mm / Pipe clamp Ø 31/34 mm	50.FA.001.1
13	1	Molla media / Mid-size spring	50.73.359.1
14	1	Gommino per molla / Rubber for spring	50.73.210.1

APPLICAZIONI / APPLICATIONS

CODICE / CODE	SILENZIATORE / MUFFLER	TUBO / PIPE	NOTE
MV.PG.0002.LV	BLACK	INOX / ST. STEEL	CATALYTIC CONVERTER NOT INCLUDED
MV.PG.0002.KV	BLACK	INOX / ST. STEEL	CATALYTIC CONVERTER INCLUDED